

Updates on the African Swine Fever Prevention Program



MAY M. MAGNO, DVM

Chair, African Swine Fever Taskforce
Bureau of Animal Industry
Department of Agriculture

Outline

- A**- about the disease
- S**- strategies for prevention
- F**- followup on actions

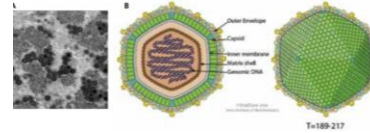
African Swine Fever

Virus

Fatal and Contagious

No vaccine available

No treatment



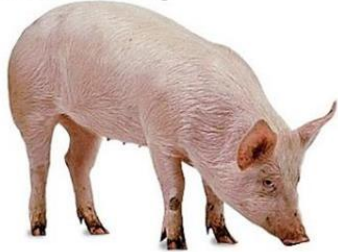
Picture taken from <http://www.asianews.it/news-en/Beijing-almost-a-million-pigs-killed-in-African-swine-fever-outbreak-45992.html>



**ASF is not a
human health
threat.**

Animals Affected

Domestic Pig



Warthog



Bushpig

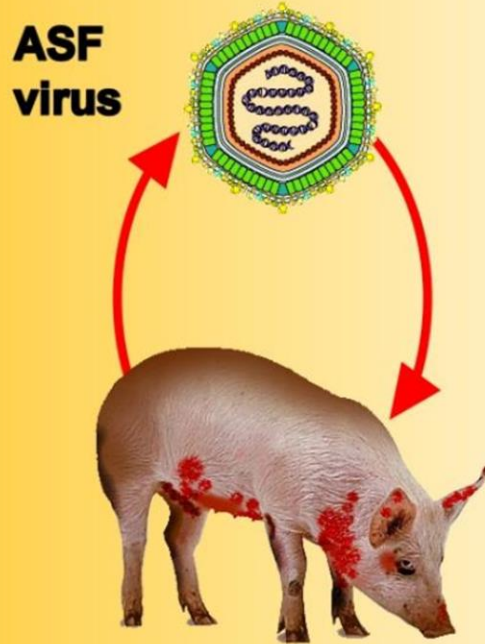


Giant forest hog



- All members of the pig family
 - clinical disease is only seen in domestic and feral pigs/ European wild boar
- Wild African suids
 - asymptomatic carriers of ASF and act as reservoir of the virus

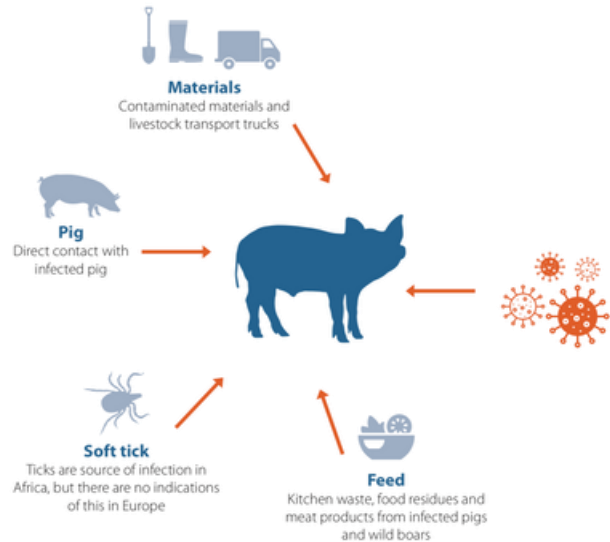
Characteristics of the ASF virus



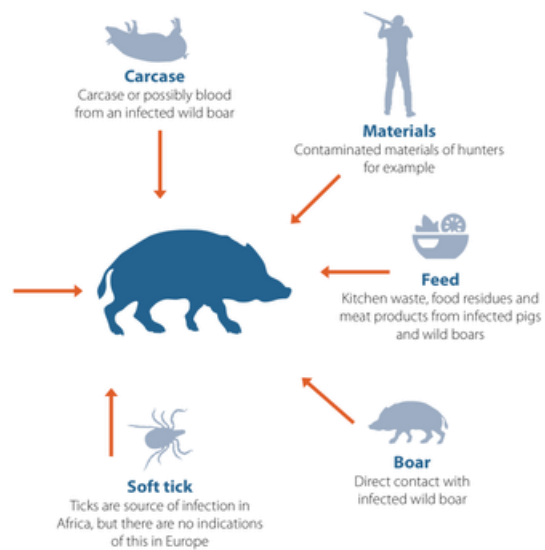
1. Highly resistant in the environment
2. Survives freezing
3. Survives pH levels 3.6 -11.5

Transmission

How do **pigs** become infected?



How do wild **boars** become infected?



Clinical Diagnosis

Sudden death (acute form: 6 to 13 days)

Mortality rate: approaches 100%

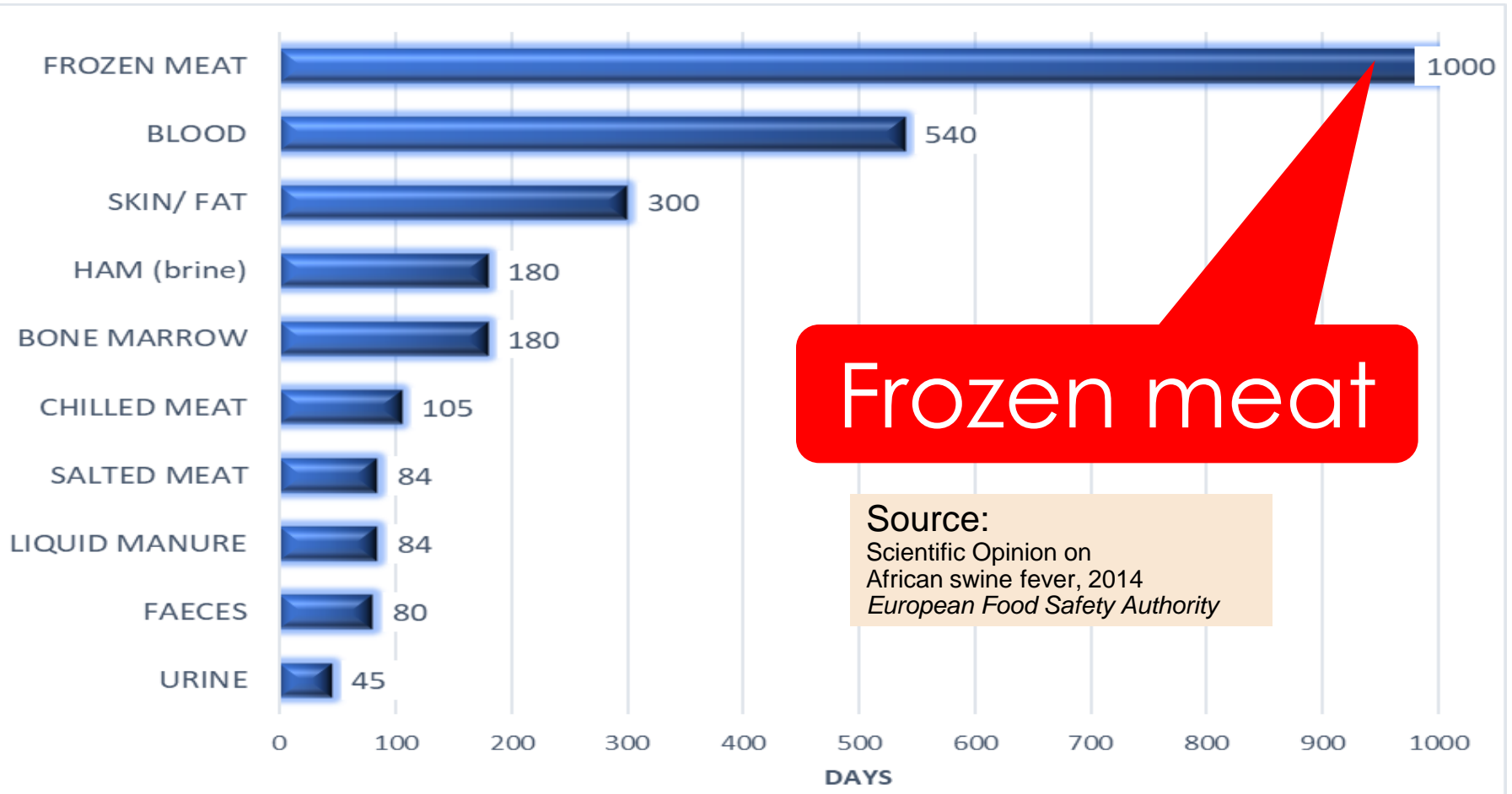
Survivors are virus carriers for life

Clinical signs of acute African Swine Fever

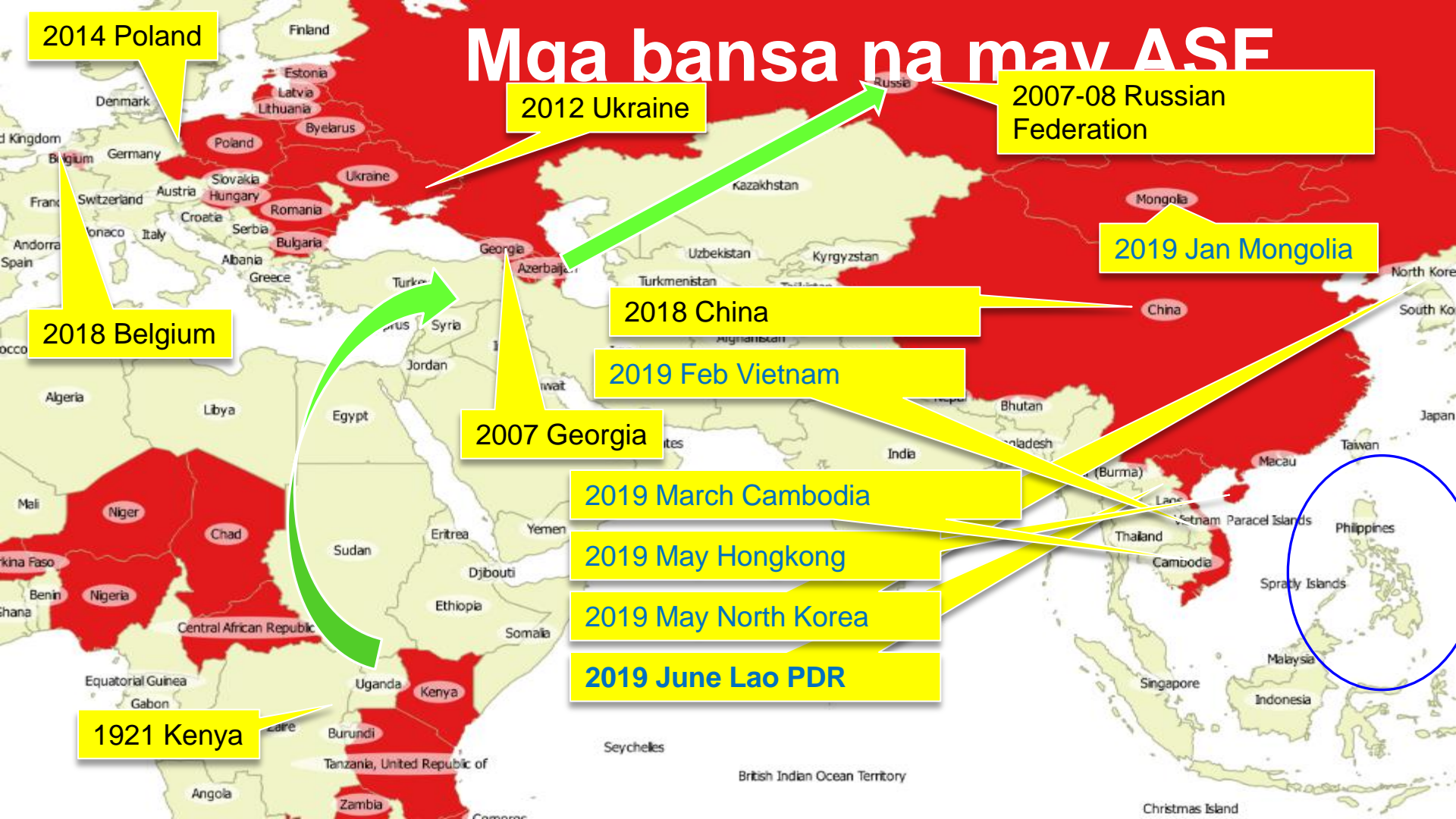
- A – pigs are visibly weak with fever and huddle to stay warm
- B-E – bloody diarrhoea and distinct hyperaemic (red) areas on skin of neck, chest and extremities
- F – Cyanosis (bluing) at the tips of ears
- G-I – Necrotic lesions on skin of the abdomen, neck and ears



Virus detection post infection



Mga bansa na may ASF



2014 Poland

2012 Ukraine

2007-08 Russian Federation

2018 Belgium

2018 China

2019 Jan Mongolia

2019 Feb Vietnam

2007 Georgia

2019 March Cambodia

2019 May Hongkong

2019 May North Korea

2019 June Lao PDR

1921 Kenya

Philippines

China



MORTALITIES

China

DEPOPULATION



China



China

MASS BURIAL



China

BURNING






China



[Videos taken from FB](#)

Outline

-  **A-** about the disease
-  **S-** strategies for prevention
-  **F-** followup on actions

Government Action: BAI Emergency Meeting



Republic of the Philippines
Department of Agriculture
BUREAU OF ANIMAL INDUSTRY
Diliman, Quezon City, Philippines

AFRICAN SWINE FEVER Technical Advisory 31 August 2018

The Philippine swine industry is one of the biggest contributors to the country's agricultural growth, posting over 16% increase in gross earnings, owing to the increasing demand for pork and production expansion. The country's total swine inventory is estimated at 12.78 million as of 1 July 2018. The Philippines ranks eighth (8th) in the world in terms of pork volume production and number of breeding sows. Historically, the country is free from African Swine Fever (ASF). Thus, incursion of the disease in the Philippines will result to great economic loss due to direct and indirect damages to the industry.

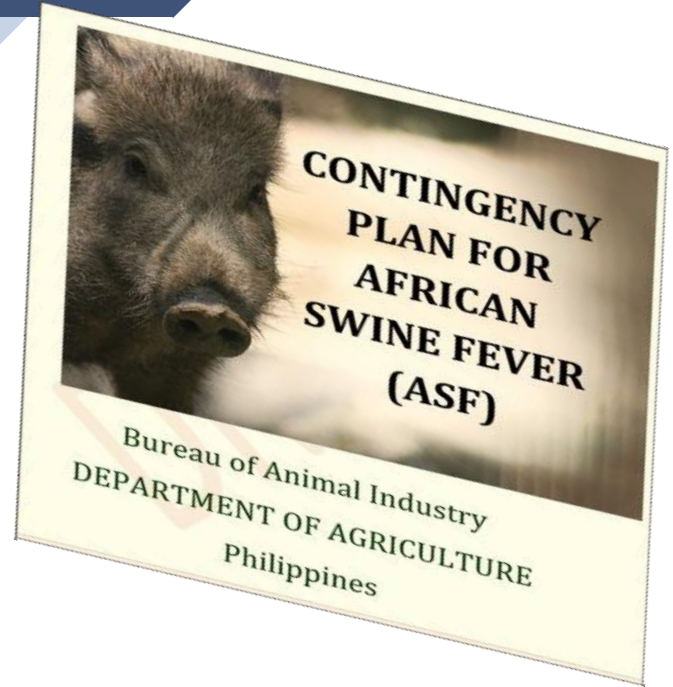
In relation to the current outbreak of ASF in South Africa, Europe, Russia and now in China, and to protect the local swine industry, the Department of Agriculture (DA) has issued the following Memoranda as part of precautionary measures to prevent the entry of the disease into the country, namely:

- **DA Memorandum Order No. 22 Series of 2018** "Prohibition on the Use of Catering Food Wastes/Left-overs from International and Domestic Airports and Seaports as Swine Swill Feed Throughout the Country"
- **DA Memorandum Order No. 23 Series of 2018** "Temporary Ban on the Importation of Domestic and Wild Pigs and their Products Including Pork Meat and Semen Originating from Latvia, Poland, Romania, Russia, Ukraine and China"

All veterinary quarantine personnel in our international airports and seaports have been alerted to prevent the entry of the disease.

African Swine Fever (ASF) is a highly contagious hemorrhagic disease of domestic and wild pigs of all ages. The disease is characterized by high fever, loss of appetite, hemorrhages in the skin and internal organs, and death which follows between 2-10 days on the average. Mortality can be as high as 100%. The disease is listed as notifiable disease in the World Organization for Animal Health (OIE) Terrestrial Animal Health Code and must be reported to the OIE World Animal Health Information System (WAHIS) once detected.

Although not considered a zoonotic disease, swine raisers are encouraged to strengthen and strictly implement farm biosecurity measures. The public is enjoined to support the government's



August 2018

Government Strategies against ASF

BAN pork imports

AVOID swill feeding

BLOCK entry

EDUCATE our people

SUBMIT lab samples



Ban



Ban importation of

domestic and wild pigs, their meat, meat products and by-products from ASF affected countries

B **A** **B** **E** **S**

Strict Implementation of Pre-border Policies

DA Memorandum
Circular #12, s.2017

*Importation
procedures
for live
animals*

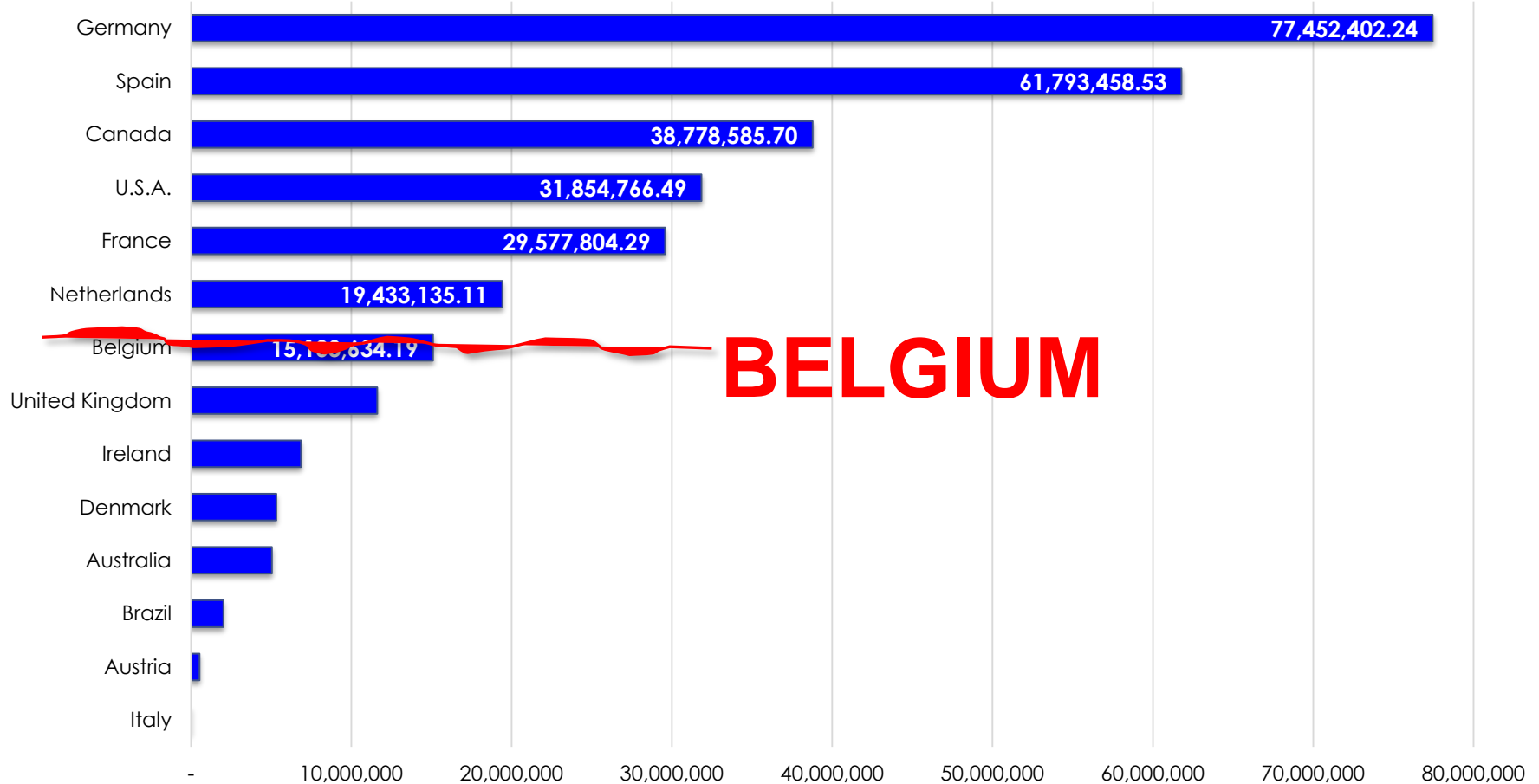


DA Admi. Order #16, s2006
Pre-Border Measures for the
Export of Meat and Meat
Products to the Philippines



Pre-Border Policies

The major sources of imported pork, 2017



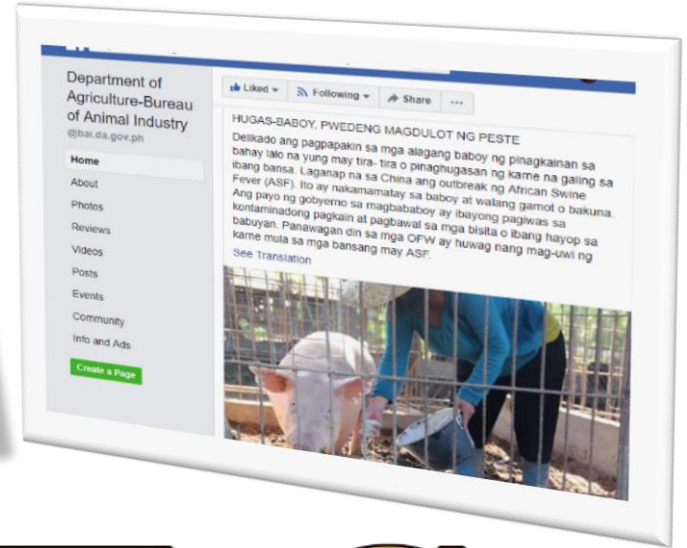
Ban- 19 countries

Russia	Hungary	China
Ukraine	Bulgaria	Mongolia
Czech Republic	Belgium	Vietnam
Moldova	Latvia	Cambodia
South Africa	Poland	Hongkong
Zambia	Romania	North Korea

+ Lao PDR

B **A** **B** **E** **S**

Avoid- Swill feeding



B A B E S

Block



- **Smuggled** shipments
- **Luggages** from ASF affected countries
- **Hand carried items**
- **Food wastes** from foreign vessels

B A B E S

Coordination: Airport authorities, Bureau of Customs



Hand-carried meat products



At the Airports



Foot bath vs disinfection mat

Airport, R9



Upgraded mats



NAIA CUSTOMER HOTLINE:
(02) 877 1111

AGRICULTURAL
QUARANTINE
FISH
PLANT
ANIMAL

PROTECTED PHILIPPINE AQUATIC WILDLIFE



PLEASE DROP YOUR MEAT & MEAT PRODUCTS HERE. THANK YOU

PLEASE DROP YOUR MEAT & MEAT PRODUCTS HERE. THANK YOU



**Meat Disposal
Bin ready at NAIA
3**



Ready for disposal



ATTENTION ASF
African Swine Fever
IS A SERIOUS THREAT TO
THE PIG SECTOR IN THE REGION
Pigs, boars and wild
pigs are the main
susceptible hosts of the
disease and can spread the
disease to other pigs.
Susceptible
pigs

Team SUBIC BAY

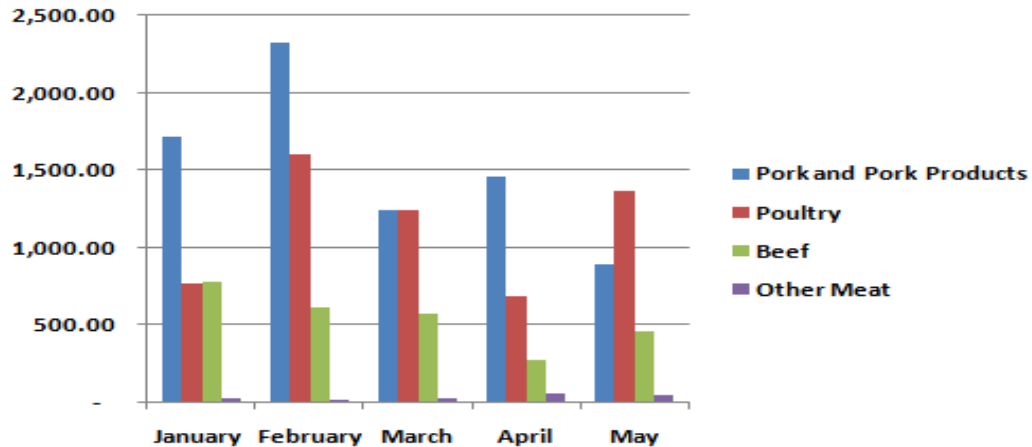
ASF WATCH | Meat products from China, hidden with other foodstuff, seized at Subic port

By **Henry Empeño** - June 4, 2019



Summary of Confiscation Reports, January to May, 2019

Type of Product/s	January	February	March	April	May	Total (kg)
Pork and Pork Products	1,721.72	2,328.18	1,248.00	1,464.25	898.18	7,660.33
Poultry	769.94	1,606.00	1,240.00	694.35	1,370.61	5,680.90
Beef	780.34	614.87	574.00	281.65	462.45	2,713.31
Other Meat	27.00	22.10	29.00	59.25	51.00	188.35
Grand Total (Meat)	3,298.99	4,571.15	3,091.00	2,499.50	2,782.24	16,242.88
Table Egg (pcs)	768.00	609.00	681.00	2,423.00	1,559.00	6,040.00



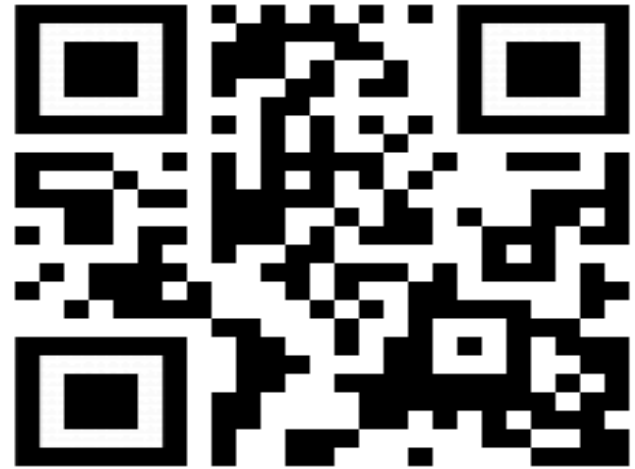
Meat Sniffing Dogs



Educate

Link to our information materials

BAI Website

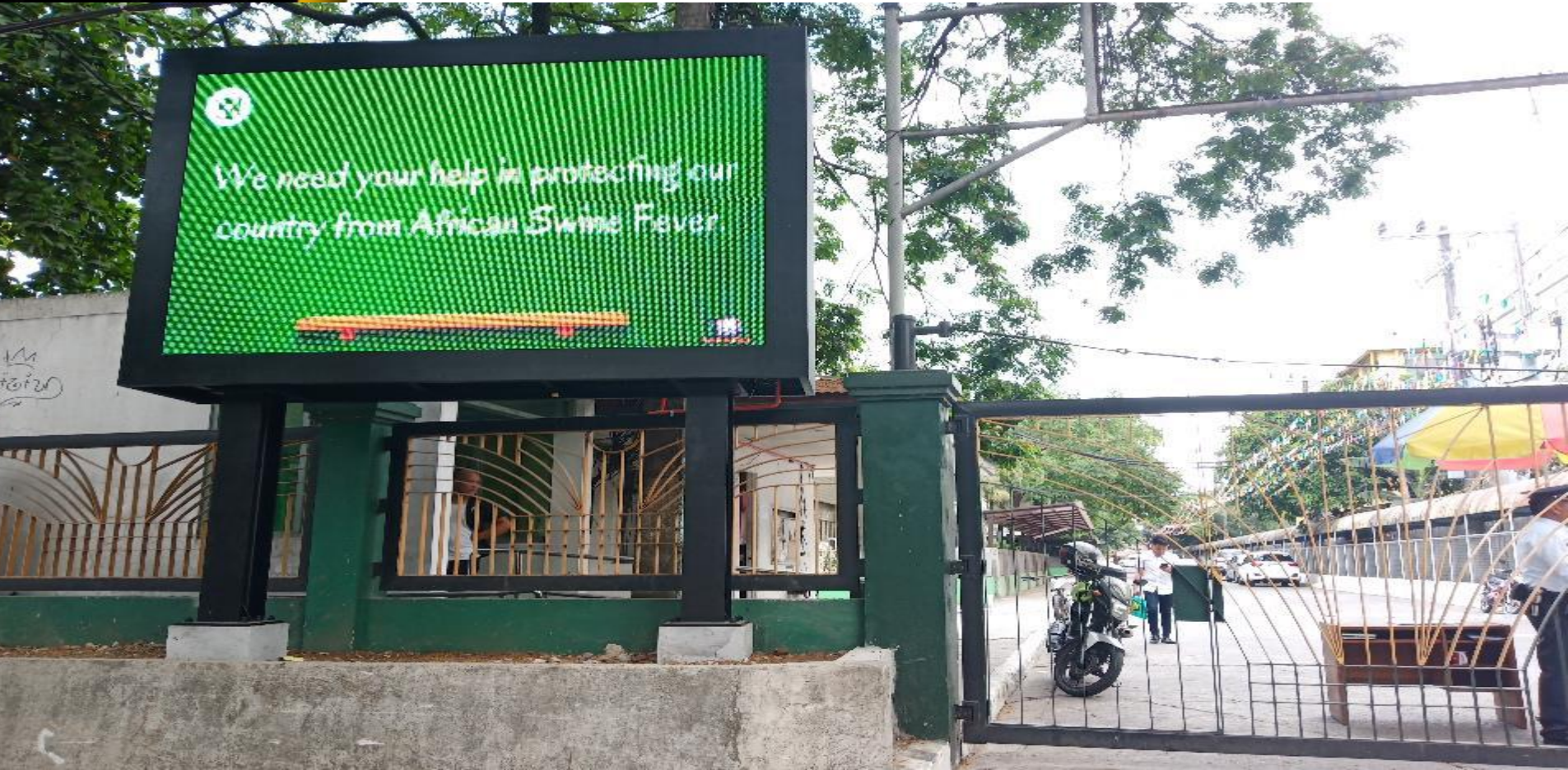


<http://bit.ly/2Gp5EH5>

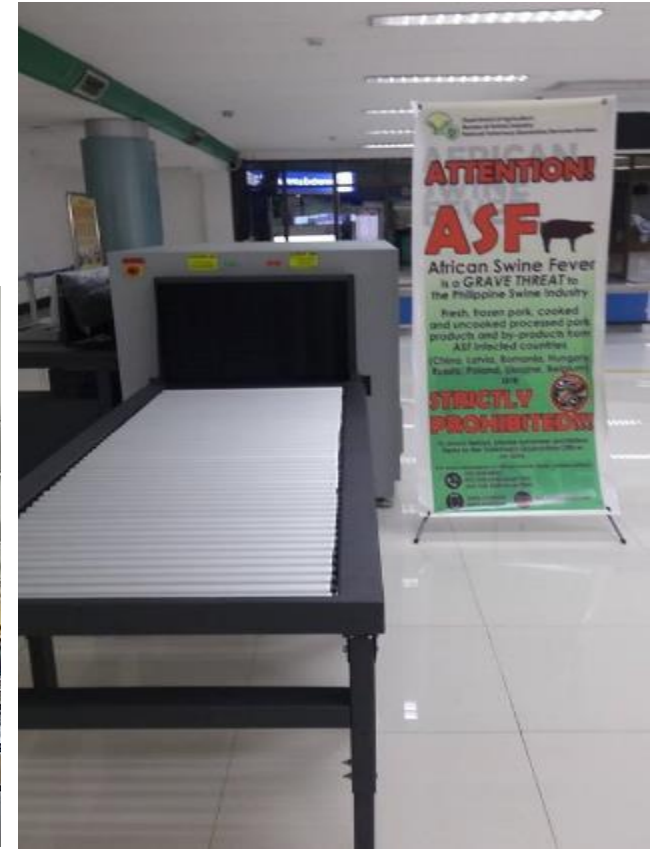
Or Visit BAI ASF Taskforce Facebook Page

B A B **E** S

Araw-araw sa Bureau of Animal Industry



Airport Ads



DON'T BRING PORK AND PORK BY-PRODUCTS LIKE SAUSAGES, HAMS ETC. TO THE PHILIPPINES

IT WILL BE CONFISCATED AT THE AIRPORT
TO PREVENT SPREAD OF

AFRICAN SWINE FEVER
DISEASE COMING FROM ROMANIA, RUSSIA,
SOUTH AFRICA, UKRAINE, ZAMBIA,
BELGIUM, BULGARIA, CZECH REPUBLIC,
HUNGARY, LATVIA, MOLDOVA, POLAND,
CHINA, VIETNAM, MONGOLIA, CAMBODIA,
HONG-KONG AND NORTH KOREA

PENALTY: PHP 200,000



**EAT
PINOY PORK**

SUPPORT OUR FARMERS



CeViPPCo
Central Visayas Pork Producer Cooperative



NOTICE TO FOREIGN SHIPS CREW AND VISITORS

KEEP ANIMAL DISEASES OUT OF THE PHILIPPINES!
Products of animal origin are possible carriers of infectious diseases

MUST DO!

STEP on the footbath upon disembarkation



STRICTLY PROHIBITED!



BRINGING OUT of meat, meat products and food waste
from vessels docking at any Philippine port

All meat and meat products
without corresponding permits
will be confiscated.

Republic Act 10611, DA AO Series
2010

Use of catering food waste/left-
overs from international and
domestic airports and seaports
as swine swill feed throughout
the country is prohibited

DA MO No. 22 Series 2018

**SANITARY PHYTOSANITARY (SPS) import clearance is a requirement
for products of animal origin to enter into the Philippines**



Department of Agriculture
Bureau of Animal Industry
Tel. No. (02) 528-2240 local 1304-1305
E-mail: baiquarantineph@gmail.com
Website: www.bai.gov.ph

Mga beterinaryo ng bawat bayan (PCMVLP) January 30, 2019, Batangas





Consultation with Experts



Philippine College of Swine Practitioners, Feb 28, 2019

Regional QRT ASF Preparedness Workshop



 
**African Swine Fever (ASF)
Orientation-Workshop for
Regional Quick
Response Team**

Submit samples



B

A

B

E

S

Samples Tested*

- 386 samples tested
- 34 positive
 - 1/24 canned meat



Outline

- ✔ **A**- about the disease
- ✔ **S**- strategies for prevention
- ☑ **F**- followup on actions

Actions

Updates June 2019

ASF Contingency Plan

- Feedback received from stakeholders
- For public consultation

Meat-sniffing dogs

- Started deployment May 2019

Actions

Updates June 2019

Local Quick Response
Teams

- Regional QRT available
- Deputation of Marinduque PVO as Animal Quarantine Inspector (AQI)

Simulation Exercises

- Initial conducted March 2019
- Additional exercises – July 2019

Actions	Updates June 2019
Declaration of a state of emergency	<ul style="list-style-type: none">• Request sent to Office of the President
Indemnification Fund	<ul style="list-style-type: none">• DBM requesting guidelines
Imposition of fines	<ul style="list-style-type: none">• Will be anchored to RA 10536
Coordination with DOH-FDA	<ul style="list-style-type: none">• DOH-FDA received all updates regarding ASF

Actions

Updates June 2019

Coordination with DOTr

- Approved the following:
 - Placement of Quarantine Officer with sniffing dogs
 - IEC materials (eg. tarpaulins, poster, airline spiels)
 - Trash bins

Quick Response Fund

- Purchase of 20 x-ray units for airports with international arrivals

ASF

COMMUNICATION PLAN

and how the private sector can help

ASF communication material portals

← → ↻ Not secure | www.bai.gov.ph



Republic of the Philippines
Department of Agriculture
BUREAU OF ANIMAL INDUSTRY



**AFRICAN SWINE
FEVER (ASF)**

IEC Materials
(Click here to view)

https://www.facebook.com/baiasftaskforce/

BAI ASF Task Force

Page | Inbox 15 | Notifications 99 | Insights | Publishing T... | Ad Center | More ▾ | Settings | Help ▾

Learn how to use ads to get results and reach more people. ×

Add yourself to the BAI A...
Support your Page and build...
[Add Yourself to Team](#)



Year of the Pig:
Ingatan ang ating mga alaga

BAI ASF Task Force
@baiasftaskforce

- Home
- Posts
- Reviews
- Videos
- Photos
- About
- Community
- Groups

Liked ▾ | Following ▾ | Share | ...

[Send Email](#)

Communications efforts done

Key message	Materials	Target	Method of distribution
ASF and control strategy	Video	General public/industry stakeholders	Social media (facebook), TV at airports
Don't bring meat products	Tarpaulin/ Poster/ Flyer	Travellers at Airports and Seaports	Poster installation at airports and seaports
Don't bring meat products	Social media banner	Embassies, Travel agencies, OFW groups	Facebook campaign

How the private sector can help us?

1. Development of IEC materials



Mass printing of IEC materials

They could provide funding support for printing or they can print by themselves if they have the network/facility



Design of IEC materials

They could have creative graphic/layout artists which can create good communication materials. However, they must ask for clearance from the BAI ASF task force so that our key message are coherent

poster, flyer, social media banners, video, etc.

How the private sector can help us?

2. Distribution of communication materials



Distribute

Use their resources to distribute flyers, posters, and other printed materials



Share

Share posts, news, ads, video and other IEC materials. Encourage their friends to do the same so we can reach more audience



Media network

Help us inform through their media partners (television, radio, newspapers). Better if they are willing to do it for free as public service for the sake of our industry and economy

How the private sector can help us?

3. Provide/suggest solutions to the government



We acknowledge ideas and solutions that could help us improve doing things because preventing ASF needs multi-sectoral collaborations and the government cannot do it alone

Mga Paalala:

1. I-report agad ang mga biglaang pagkakasakit o pagkamatay ng mga alagang baboy sa Municipal, City or Provincial Veterinary Office

2. Bigyan ng sapat at tamang pakain, malinis na tubig at maayos na kulungan ang mga alagang baboy

Mga Paalala:

- 3. Ugaliing maglinis at magdisinfect ang kulungan at paligid**
- 4. Limitahan o pigilan ang pagpasok ng tao, gamit, o sasakyan sa kulungan o sa farm**

Conclusion



African Swine Fever is serious disease challenge requiring multi-sectoral and multi-level cooperation



Maraming
Salamat po