

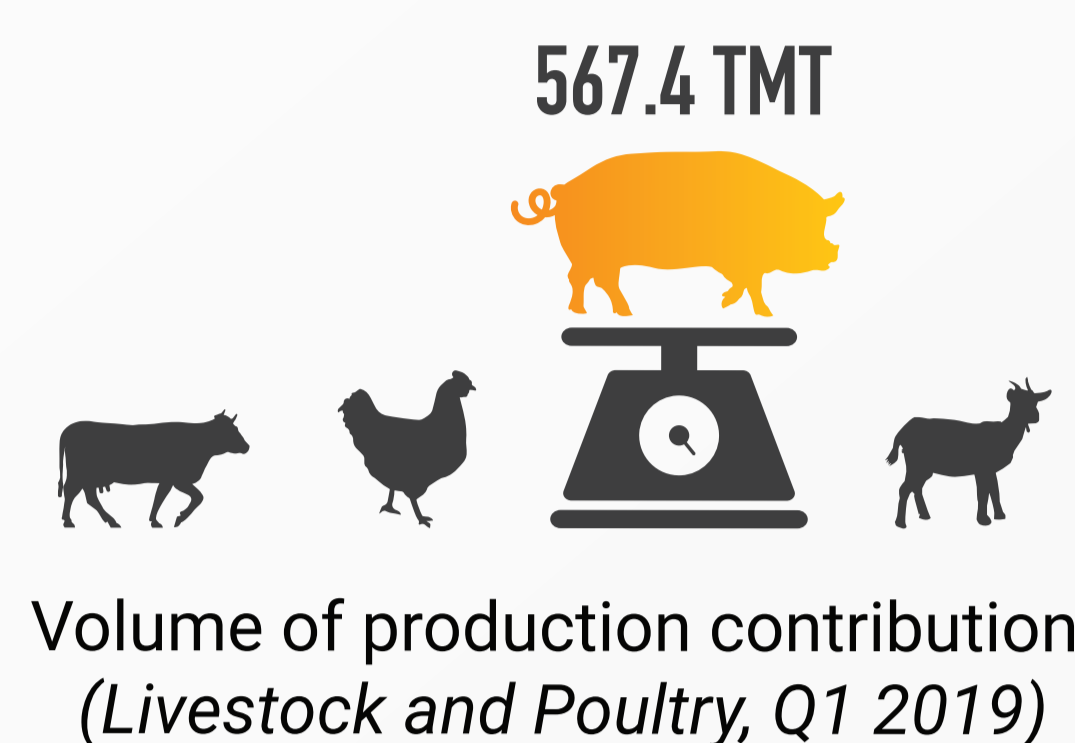
# SWINE VETERINARY PRACTICE TRENDS IN THE PHILIPPINES

Roselle Falconite - Cudal<sup>1</sup>, Tomas Acorda<sup>1</sup>, Jordan Sagalongos<sup>2</sup>

<sup>1</sup>PCSP – Philippine College of Swine Practitioners,

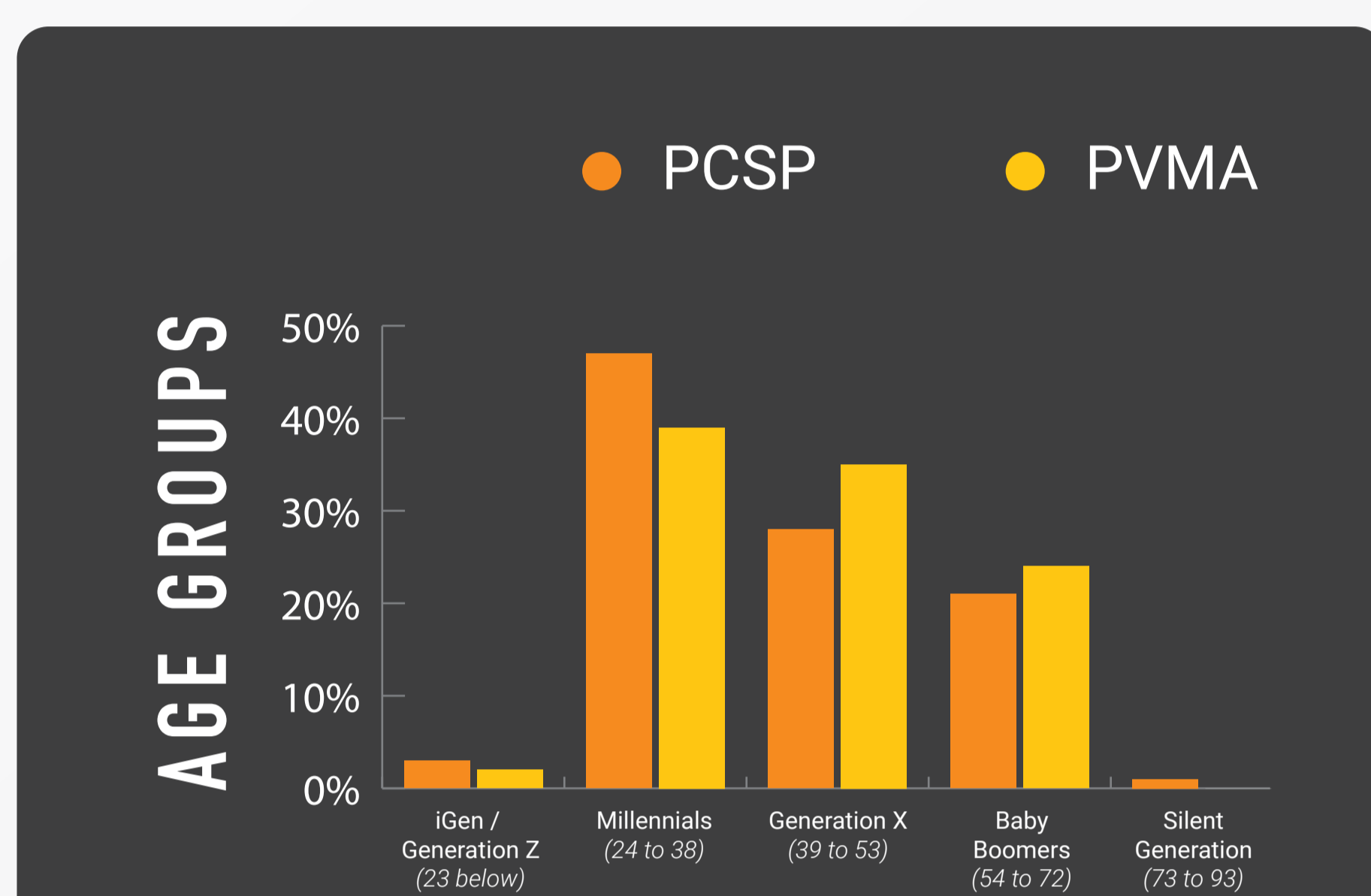
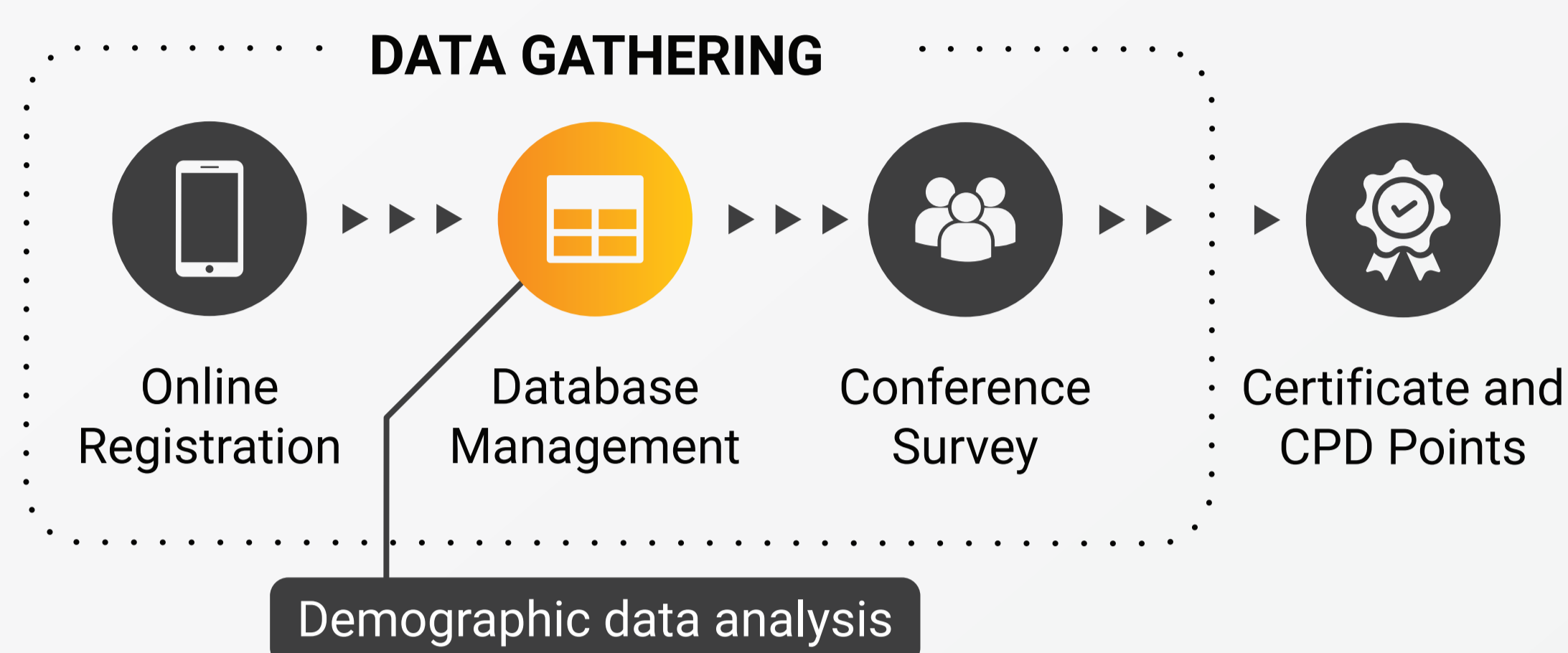
<sup>2</sup>PVMA – Philippine Veterinary Medical Association/ICPD Gateway, Philippines

## INTRODUCTION



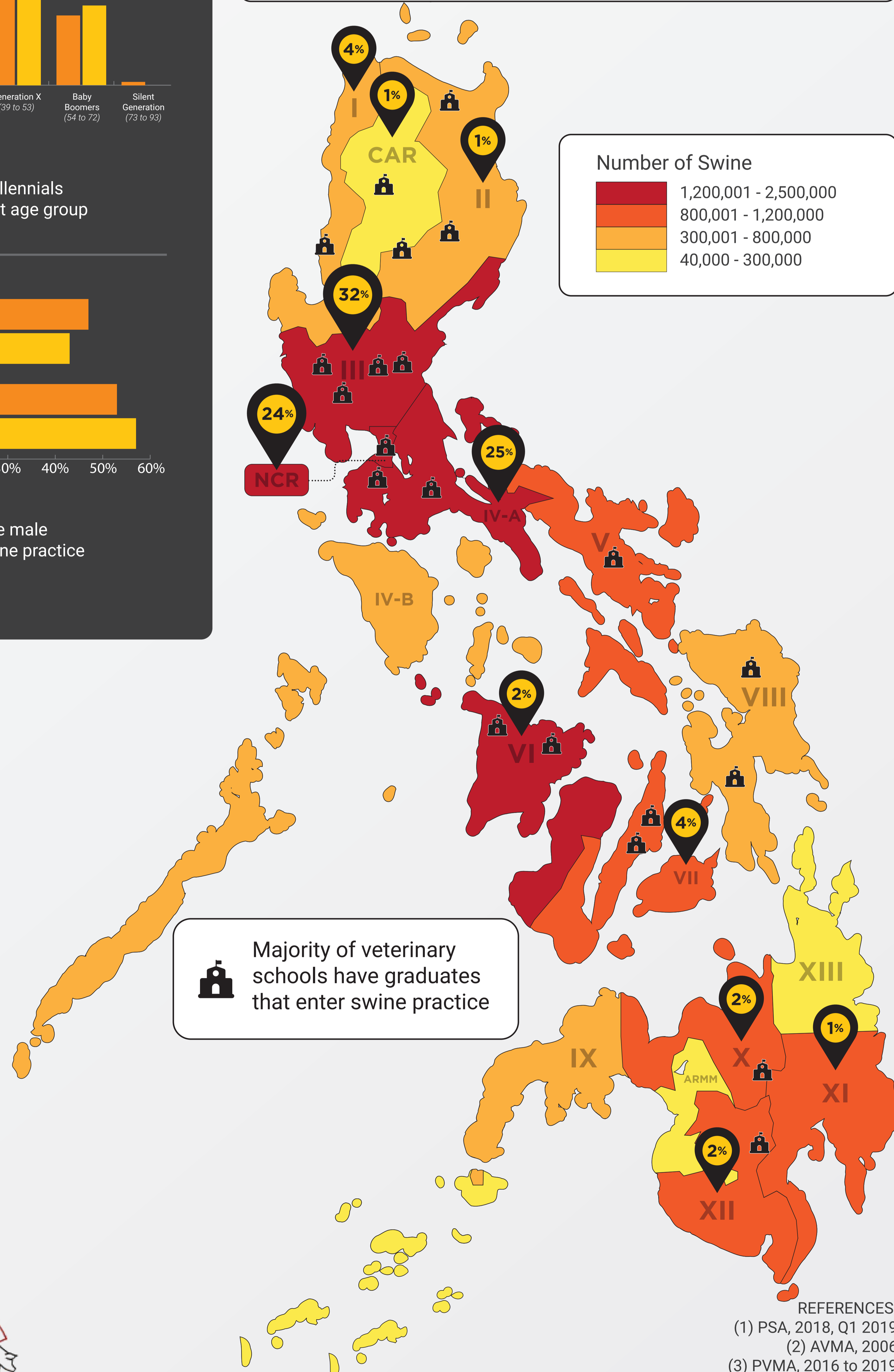
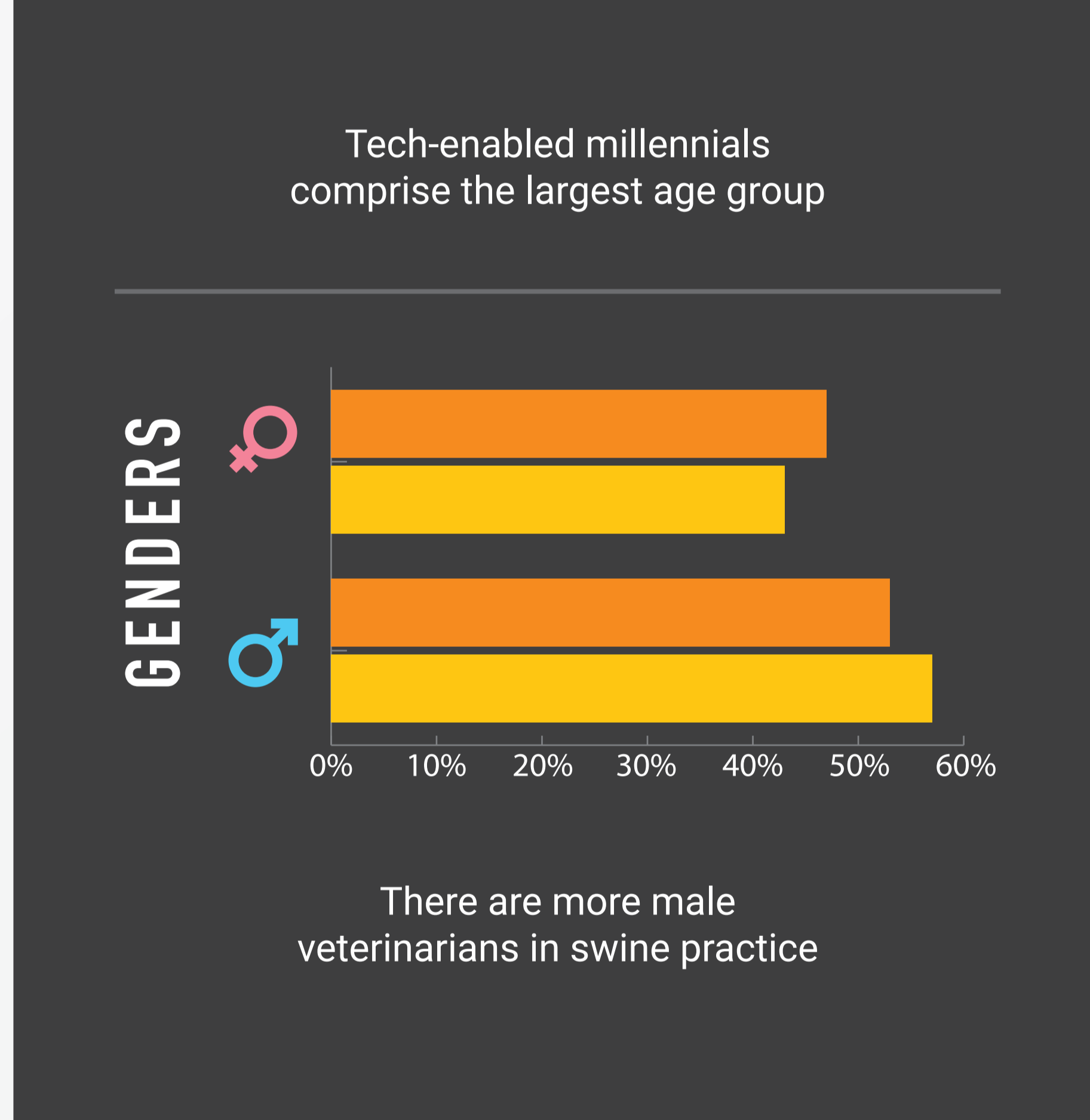
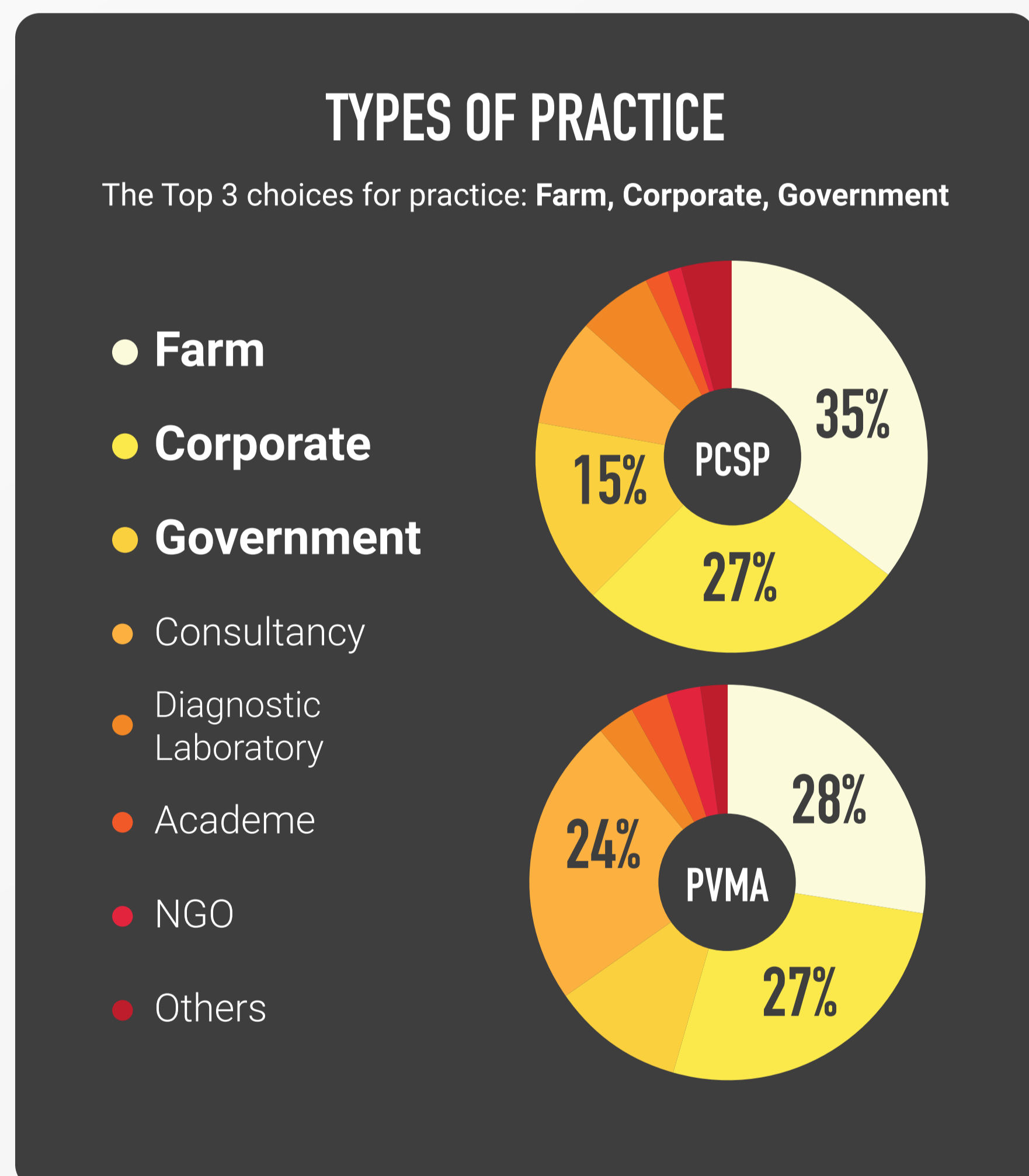
The veterinary complement for the swine industry is important to consider

## MATERIALS & METHODS



**VETERINARY COMPLEMENT IN SWINE AREAS**

A high number of veterinarians practice in the areas with the top two biggest swine populations and the headquarters of most business companies.



## SUMMARY

Swine practice is a popular choice for veterinarians in the Philippines.

Technologically adept age groups, adopt technology for data gathering and for faster information dissemination.

The top two swine production areas have a good number of swine practitioners.

Professional organizations to formulate programs and activities to encourage veterinarians and veterinary graduates whose career choices are in swine practice.